

Combined Antibacterial Activity of Ethanol Extracts of *Psidium guajava* and *Persea americana* Leaves on MRSA

Enwa Felix Oghenemaro^{1*}, Oyubu Levinson Obaro², Eneni Aya-Ebi Okubo³,
Akintoke Adebayo Badmus¹

¹Department of Pharmaceutical Microbiology and Biotechnology, Faculty of Pharmacy, Delta State University Abraka, Nigeria.

²Department of Science Laboratory Technology, Faculty of Science, Delta State University, Abraka, Nigeria.

³Department of Pharmacology and Toxicology, Faculty of Pharmacy, Delta State University Abraka, Nigeria.

ABSTRACT

Methicillin Resistance *Staphylococcus aureus* strains have prompted this study to be able to opt in for an alternative. This study aims to evaluate the combined antibacterial effect of ethanol extracts of *Persea americana* and *Psidium guajava* leaves against Methicillin Resistance *Staphylococcus aureus* isolates. The powdered plant material was extracted using a cold maceration process using 80% v/v ethanol. Standard operating protocols were employed to analyze the phytochemical findings. The antibacterial sensitivity of the extracts was tested using the agar diffusion method. Ethanol extracts of *Persea americana* and *Psidium guajava* were subjected to an antibacterial test separately and combined antibacterial effect against isolates of Methicillin Resistant *Staphylococcus aureus*, (MRSA), by determining their zones of inhibition using the agar cup diffusion method. Results show varying zones of inhibition and minimum inhibitory concentration, MIC for Ethanol extracts for *Persea americana* and *Psidium guajava* leaves when tested against isolates of MRSA. Zones of inhibition ranging from 4-12mm and MIC ranged from 50mg/ml to 200mg/ml, while that of ethanol extract of *Psidium guajava* zones of inhibition ranged from 4mm to 12mm, and minimum inhibitory concentration, MIC ranged from 12.5mg/ml to 200mg/ml. The combined antibacterial effect of the ethanol extracts of *Persea americana* and *Psidium guajava* leaves revealed a synergistic effect with the zones of inhibition ranging from 20-30mm. In conclusion, the combined antibacterial effect of both plants showed a synergistic antibacterial effect with very high antibacterial activity and this could be a good candidate to combat MRSA and also prevent drug resistance.

Keywords: *Persea americana*, *Psidium guajava*, Antibacterial, Synergistic, MRSA.

HOW TO CITE THIS ARTICLE: Oghenemaro EF, Obaro OL, Okubo EAE, Badmus AA. Combined Antibacterial Activity of Ethanol Extracts of *Psidium guajava* and *Persea americana* Leaves on MRSA. Entomol Appl Sci Lett. 2023;10(4):35-43. <https://doi.org/10.51847/ucfxaYA9Cq>

Corresponding author: Enwa Felix Oghenemaro

E-mail ✉ felixenwa@delsu.edu.ng

Received: 02/09/2023

Accepted: 05/12/2023

INTRODUCTION

Psidium guajava and *Persea americana* are known to be an excellent source of drugs. The incumbent global challenges of the increase in resistance of infectious agents to the already known synthetic drugs have paved the way for the search for newer sources of antibiotics in all institutions [1]. Every particular plant in nature has medicinal value responsible for its

uniqueness. The plant *Psidium guajava*, commonly known as guava is a tropical plant widely grown for fruit. It belongs to the family; Myrtaceae and Class; Magnoliopsida. All parts of *Psidium guajava* are used for therapeutic purposes [2].

The leaves of *Psidium guajava* are opposite, oblong, 3 to 7 inches (7.6-18cm) in length, with serrated margins having prominent veins on the lower side. All Guava trees are known to be well adapted to warm subtropical to tropical climatic

conditions. The temperature range for its growth and production ranges from 73F to 83F [3].

Active ingredients in Psidium guajava are thought to aid in the treatment and management of several illnesses. The aqueous extract of the root bark and leaves is effective in the management of gastrointestinal ulceration, diarrhea, and toothache among others [4]. The aqueous extract of the root has also been found to be effective in indigestion, stomach ache, constipation, and antitussives [5]. In addition, the extract of the *Psidium guajava* leaves has also been reported to be effective in the treatment of pulmonary diseases and relieving episodes of asthma attacks [6].

The *Psidium guajava* extracts have been examined to determine whether the leaves and roots contain any bioactive elements [7]. The phytochemical analysis has given evidence that the aqueous and ethanol leaf extract of *P. guajava* contained different classes of bioactive constituents such as saponins, alkaloids, tannins, sterols cardiac-glycosides, terpenes, and flavonoids. The results showed that saponins, tannins, and alkaloids were present in high concentrations, while terpenes, cardiac glycosides, flavonoids, and sterols were present in small concentrations [8]. According to a report, flavonoids extracted from guava leaves are believed to be responsible for antibacterial activity [9].

Persea americana also known as 'avocado pear' belongs to the family 'Lauraceae'. To a large extent, they are cultivated amidst the tropics, including the subtropics of the world majorly for edible fruits and most importantly for their therapeutic and prescient uses [10]. The aqueous extracts of the leaves, fruits, and course the bark of the avocados have been effective as an anti-inflammatory, hypertension, and antibacterial [11-13].

Staphylococcus aureus, a Gram-positive bacterium, non-motile, is found in the nasal mucosa of humans in commensalism relationships [14]. The disruption in the cutaneous and the mucosa layer, as found in soft tissue infection could allow the penetration of the *Staphylococcus aureus* into the bloodstream to cause infection. Patients with compromised immune systems are more vulnerable [15].

Penicillin discovery by Alexander Flemming was seen as a huge effort to wage war against

infection caused by *Staphylococcus aureus* [16]. However, due to the survival ability of this pathogen that paved the way for the emergence of strains that are resistant to penicillins, some exertions lead to the development of newer Beta-lactam (the anti-staphylococcus class), which include the Methicillin, flucloxacillin, Oxacillin, and dicloxacillin [17]. In the early 1960s, the emergence of the MRSA was documented [18]. The strain Methicillin *Staphylococcus aureus*, (MRSA), has posed the greatest challenge in the healthcare system and community settings. This in a few cases leads to prolonged infection, an increase in direct and indirect costs, an increase in the number of stays in the hospital, and many cases increase in mortality [19].

The resistance of MRSA to the anti-staphylococcal penicillin subclass of the beta-lactam class of antibiotics and the emergence of accumulating resistance to obtainable synthetic antibacterial antibiotics have implications for current and future treatment options for this particular pathogen [20]. This has called for the investigation into plants as sources for novel drug compounds. Plants as known provide a very reliable source of lead compounds which are effective in mitigating the spread of infection globally. These plants can also be improved through modifications to render them less toxic. Consequently, the objective of this research is to evaluate the combined effect of the ethanol extract of *Psidium guajava* leaves and the ethanol extract of *Persea americana* leaves on Methicillin Resistant *Staphylococcus aureus*, (MRSA).

MATERIALS AND METHODS

Collection and identification of plant materials

The leaves of *Psidium guajava* and *Persea Americana* were collected from Umuno in Abraka, Delta State, Nigeria in December 2022. The identification and authentication of the plants were done by Dr. Emmanuel Ikpefan, a botanist in the Department of Pharmacognosy and Traditional Medicine, Faculty of Pharmacy, Delta State University, Abraka, Nigeria. A sample was kept at the herbarium, Department of Pharmacognosy & Traditional Medicine, Delta State University, Abraka, Nigeria. The plant samples collected were air-dried and comminuted, and then both powders were stored at room temperature.

Extraction of plant materials

About 420g of the powdered sample of *Persea americana* leaves and 280g of the powdered sample of *Persea americana* were collected. A 420g of the powdered sample of *Persea americana* was divided into three portions in a separate bucket. A 280g of the powdered sample of *Psidium guajava* was divided into two portions. Each portion containing 140g of powdered plant material. They were macerated with 80% ethanol, with each 140g of the different plant material soaked in 560mls of ethanol separately in an airtight bucket for 72 hours. The extracts of the three portions of *Psidium guajava* were filtered using the muslin cloth. Also, the extracts of the three portions of *Persea americana* were filtered using muslin cloth. The filtrates were collected in separate beakers and were concentrated to dryness in a water bath. The resulting brown concentrate was then reconstituted using distilled water for a final weight per volume of 100mg/ml, and stored in a refrigerator at 4c until when it was required for use in the experiment.

Phytochemical screening

Secondary metabolites such as terpenes, alkaloids, flavonoids, tannins, and saponins were screened for using the standard approaches according to Evans and Trease [21].

Cell cultures

Stock cultures of 30 *Staphylococcus aureus* previously isolated were kept on Nutrient agar slants at room temperature in the Pharmaceutical Microbiology laboratory, Delta State University, Abraka for further use in this study. For re-identification, the stock cultures were further subcultured on Mannitol Salt agar and incubated for 24 hours at 37°C. stock cultures were further sub-cultured on Mannitol Salt agar and incubated at 37°C for a duration of 24h for re-identification. Those that produced yellow color indicated *Staphylococcus aureus* and these were the ones further subjected to a Methicillin-resistant test. These bacterial isolates were isolated into a single colony, streaked on a brand-new nutrient agar plate, cultured for an entire night, and then preserved at 4C pending additional research.

Test for methicillin resistance

The agar diffusion approaches were used for the evaluation of the 30 *Staphylococcus aureus*

isolates for Methicillin resistance [22]. Flucloxacillin cap. (500mg) (Ernest Chemists Limited, Accra, Ghana) was used for this study. A pure colony of each *Staphylococcus aureus* isolate was picked using a wire loop and then inoculated into an already sterilized nutrient broth covered with aluminum foil and left overnight. Each nutrient broth culture's turbidity was adjusted to meet McFarland turbidity requirements. The surface of the thirty Mueller Hinton Agar plates that had already solidified and been meticulously labeled was then swapped out using each of the modified broth cultures. After discarding the leftover nutrient broths into a jar for disinfection, each Mueller Hinton agar plate was allowed time to dry on its surface. Using a sterile surgical blade, the antibiotic discs were placed aseptically in duplicate on each plate rightly on the surface of the already dried inoculated Mueller Hinton agar plates. The plates were incubated at 37°C for a duration of 24h. After the incubation, all plates were carefully examined for inhibition zones around the two paper discs on each plate. The zones of inhibitions on each plate were measured using a meter rule in diameters and they were recorded accordingly. Means of inhibition zone diameter were calculated and recorded to the nearest whole millimeter. Thereafter each of the organism isolates was classified as Methicillin Resistant *Staphylococcus aureus* strain, (MRSA), or not using a guideline given by the CLSI (2022).

Antimicrobial testing

Determination of the Zones of inhibition of Ethanol extract of *Persea americana* and *Psidium guajava* leaves.

Sensitivity: Agar well diffusion method

Ethanol extracts of *Persea americana* leaves were screened for their effect on Methicillin Resistant *Staphylococcus aureus* (MRSA).

Mueller Hinton agar was prepared for 15 Petri dishes according to the manufacturer's specifications and autoclaved at 121C for 15 minutes. The media was allowed to cool before pouring 20ml into each petri dish and they were allowed to solidify. The petri dish was each labeled according to the numbered strain of MRSA previously identified. Each of the Petri dishes was also labeled accordingly with different concentrations (200, 100, 50, 25, 12.5,

6.25) mg/ml of the ethanol plant extract previously prepared, and ciprofloxacin was used as a positive control. The agar plates were swabbed with the test organisms as labeled aseptically. Using a 6mm cork borer, a duplicate well was pouched in the agar plates. Two drops of each concentration of the ethanol extract of *Persea americana* leaves were placed into the corresponding well using a Pasteur pipette. Ciprofloxacin which served as the positive control of the experiment was placed in the well at the centre of the agar plate using a 2ml syringe. Ethanol extract of *Psidium guajava* leaves was also evaluated using the same procedures as above. The plates were incubated for 24 hours at 37C. After incubation, zones of inhibition were examined using a hand lens for proper magnifications, and zones were measured. A metric rule was placed across zones of inhibition, and measured from one edge of the zone to the other edge. We looked for inhibitory zones surrounding the wells on the plates. Using a meter ruler, the zone diameters were measured to the closest whole millimeter. Three trials of each test were conducted, and the mean IZD was recorded to the closest whole millimeter.

Determination of minimum inhibitory concentration (MIC) of plant extracts

The MIC was evaluated using the agar dilution method as specified in the procedures of CLSI (2022). Mueller Hinton agar was prepared according to the manufacturer's instructions. 19ml of molten nutrient agar was mixed with 1ml of the dilution extract of *Persea americana*, thoroughly poured into a sterile petri dish, and allowed to solidify. Each petri dish contained different concentrations of the dilution of ethanol extract of *Persea americana* leaves, (200, 100, 50, 25, 12.5, 6.5 mg/ml). The agar plates were divided into 15 parts and labeled for each test strain of MRSA. The plates were kept in the incubator overnight to check for their sterility. Using a sterile wire loop, an overnight broth culture of each of the test organisms was streaked on the surface of the agar plate on the part of the plate labeled for the highest concentration of the dilution of ethanol extract of *Persea americana* leaves (200mg/ml). The same procedure was repeated for the other five different concentrations. A nutrient agar without an extract was as well streaked and this served as a negative control. The plates were then

incubated for 24 hours at 37C and they were observed for any visible growth of each MRSA. The least concentrations that inhibited the growth of the test organisms were selected as the MIC.

The same procedures above were repeated to determine the minimum inhibitory concentrations of the different concentrations of the dilution of ethanol extract of *Psidium guajava* leaves, (200, 100, 50, 25, 12.5, 6.5 mg/ml). The least concentrations that inhibited the growth of the test organisms were selected as the MIC.

Determination of combined zone of inhibitions of ethanol extract of Persea americana and Psidium guajava leaves.

Agar plates with a subculture colony of Methicillin-Resistant *Staphylococcus aureus* labeled MRSA 1, MRSA 4, MRSA 6, MRSA 7, and MRSA 10 were selected to prepare the overnight broth.

Mueller Hinton agar was prepared according to the manufacturer's specification and autoclaved at 121C for 15 minutes. The media was allowed to cool before pouring 20ml into each petri dish and they were allowed to solidify. The agar plate surface was swabbed using a swab stick with the first test organism (standardized overnight nutrient broth of MRSA 1). The petri dishes were labeled according to the test organisms being used.

Using a 6mm cork borer, two wells were pouched close to each other with a distance of about 3mm in each agar plate. A 1ml of each concentration with the least minimum inhibitory concentration, MIC on both plant extracts of this test organism was individually placed into the corresponding well with the aid of a Pasteur pipette.

This was also done for other test organisms (MRSA 4, MRSA 6, MRSA 7, MRSA 10) using both extracts as well.

The plates were incubated for 24 hours at 37C. The combined antibacterial assay was evaluated in duplicate. After incubation, the combined zones of inhibition were carefully examined using a hand lens for proper magnification, and the zones were measured. A metric rule was placed across combined zones of inhibitions and measured from one edge of the zone to the other edge, both vertically and horizontally, and was averaged. The combined Inhibition zone diameter (IZD) was reported in millimeters.

RESULTS AND DISCUSSION

The combined use of these extracts could be efficient in the treatment of complicated infections as compared to single plant extracts. It would also reduce resistance, reduce the high cost of drugs, increase effectiveness, and reduce toxicity. However, the process could be tedious, and clinical trials could be required to ascertain safety and efficacy.

Persea americana has previously been documented to possess many antimicrobial activities [13]. Research has also been previously carried out and reveals *P. guajava* Linn. to have promising medicinal properties in combating and managing resistant bacteria like MRSA [23]. In this study, a combined antibacterial effect of ethanol extract of *Psidium guajava* and *Persea americana* leaves on Methicillin-resistant *Staphylococcus aureus* was done.

The preparative phytochemical constituents of ethanol extract of *Psidium guajava* and *Persea americana* leaves are presented in **Tables 1 and 2** respectively. **Table 1** indicates that ethanol extract of *Psidium guajava* leaves contained alkaloids, saponins and tannins in high concentration while terpenes, flavonoids and cardiac glycosides were in moderate concentration. **Table 2** indicates that ethanol extract of *Persea americana* leaves contained Alkaloids in high concentration while Saponins, terpenes, flavonoids, and tannins were in moderate concentration. Tannins had previously been reported to be responsible for the antibacterial actions against *Staphylococcus aureus* [24].

Table 1. Phytochemical constituents of *Psidium guajava* Leaves

SN	Test Plant Compound	Result
1	Alkaloid	+++
2	Terpenes	++
3	Flavonoids	++
4	Saponins	+++
5	Tannins	+++
6	Cardiac glycosides	++

++: moderate concentration
+++: high concentration

Table 2. Phytochemical constituents of *Persea americana* Leaves

SN	Test Plant Compound	Result
1	Alkaloid	++
2	Terpenes	++
3	Flavonoids	+++
4	Saponins	++
5	Tannins	++

++: moderate concentration
+++: high concentration

The results from this study revealed that the combined antibacterial effect of ethanol extract of *Psidium guajava* and *Persea americana* produced a synergistic antibacterial effect against Methicillin Resistant *Staphylococcus aureus* isolates, (MRSA). The antibacterial activity of ethanol extract of *Psidium guajava* leaves was evaluated by comparing the zone of inhibition of each MRSA isolate with that of the standard antibiotic (control) Ciprofloxacin using the agar well diffusion method. Ten clinical isolates of MRSA were subjected to the agar well diffusion test, and the findings of the MRSA screening test using *Persea americana* leaf extract are reported in **Table 3**, similarly, that of the screening test of the leaf extract of *Psidium guajava* against MRSA isolates are presented in **Table 4**. The Minimum Inhibitory concentrations were also carried out. The MIC of tested MRSA isolates varied in their sensitivities to different concentrations of the extracts.

Table 3. Sensitivity of MRSA Isolates to Ethanol Extract of *Persea americana* Leaves

MRSA isolates diameters of the inhibitory zones (in mm)										
Extract concentration in mg/ml	1	2	3	4	5	6	7	8	9	10
	200mg/ml	11	13	10.5	7.5	7	8.5	8.5	8.5	8.5
100mg/ml	9	11	9	7	6	8	7	7	7	10
50mg/ml	8	8	8	6	6	7	6	6	7	9
25mg/ml	6	7	7	5	5	6	6	6	6	9
12.5mg/ml	6	5	5	5	5	6	5	5	5	7
6.25mg/ml	5	5	5	4	4	5	5	5	4	7

Table 4. Sensitivity of MRSA Isolates to Ethanol Extract of *Psidium guajava* Leaves

MRSA isolates diameters of the inhibitory zones (in mm)										
Extract concentration in mg/ml	1	2	3	4	5	6	7	8	9	10
200mg/ml	12	11	11	11	10	10	9	10	11	11
100mg/ml	9	9	8	8	8	7	7	8	8	7
50mg/ml	8	7	7	6	7	6	6	7	6	6
25mg/ml	7	6	7	6	6	5	6	5	5	6
12.5mg/ml	6	5	5	6	6	6	5	6	5	5
6.25mg/ml	5	4	4	5	5	6	5	5	5	4

The Ethanol extract of *Persea americana* leaves was active against the ten MRSA isolates tested with a mean inhibition zone diameter between the range from 4 to 13 mm.

The Ethanol extract of *Psidium guajava* leaves was active against the ten MRSA isolates tested with a mean inhibition zone diameter within the range of 4 to 12 mm. The cleared zones that appeared around the well after incubation showed the degree of inhibition/antibacterial effect possessed by each concentration of the individual plant extracts against the test MRSA isolates, while those with cloudy appearance around the wells with no clear zones indicated that isolates were not inhibited by the extracts or they were resistant to the extracts.

The Minimum Inhibitory Concentration, MIC findings show in **Table 5** show that the ten MRSA isolates tested were inhibited by the Ethanol extracts of *Persea americana* leaves with activities ranging from 50 to 200 mg/ml while the nine (9) isolates were inhibited by the ethanol extract of *Psidium guajava* leaves varied between 12.5 and 200 mg/ml. The result of the MIC of *Psidium guajava* plant extract confirmed the antibacterial actions of Methicillin-Resistant *Staphylococcus aureus* as previously published by other co-workers [25]. Also, the result of the MIC of *Persea americana* plant extract ascertained the antibacterial action of Methicillin *Staphylococcus aureus* as previously published by other co-workers [13].

Table 5. Minimum Inhibitory Concentration for the MRSA Isolates

MRSA Isolates	Ethanol Extract of <i>Persea americana</i> leaves MIC (mg/ml)	Ethanol Extract of <i>Psidium guajava</i> leaves MIC (mg/ml)
1	50	25

2	50	12.5
3	50	25
4	50	25
5	100	12.5
6	50	25
7	100	12.5
8	100	12.5
9	50	200
10	200	-

The combined antibacterial activity of ethanol extract of *Psidium guajava* and *Persea americana* leaves was evaluated by comparing the combined Inhibition zone diameter, (CIZD), of each MRSA isolate with the least minimum inhibitory concentration (MIC), combined on both extracts. Also, the CIZD was compared with that of the standard antibiotic (control) Ciprofloxacin using the agar well diffusion method. Five clinical MRSA isolates were subjected to the agar well diffusion test, and **Table 6** further presents the findings of the extracts' screening test against the tested MRSA isolates.

Table 6. Combined Zone of Inhibitions of Selected MRSA Isolates with Minimum Inhibitory Concentration for Both Plant Extracts.

MRSA isolates diameters of the combined inhibitory zones (in mm)					
Combined MIC on Both Extracts	1	4	6	7	8
50mg/ml + 25mg/ml	23				
50mg/ml + 25mg/ml		22.5			
50mg/ml + 25mg/ml			20		
100mg/ml + 12.5mg/ml				20.75	
100mg/ml + 12.5mg/ml					29

MRSA 1 with the least MIC of 50mg/ml and 25mg/ml for the ethanol extract of *Persea americana* and *Psidium guajava* leaves respectively, gave a mean combined inhibition zone diameter of 23mm. MRSA 4 with the least MIC of 50mg/ml and 25mg/ml for the ethanol extract of *Persea americana* and *Psidium guajava* leaves respectively, gave a mean combined inhibition zone diameter of 22.25mm. MRSA 6 with the least MIC of 50mg/ml and 25mg/ml for the ethanol extract of *Persea americana* and *Psidium guajava* leaves respectively, gave a mean combined inhibition zone diameter of 20mm. MRSA 7 with the least MIC of 100mg/ml and

12.5mg/ml for the ethanol extract of *Persea americana* and *Psidium guajava* leaf respectively, gave a mean combined inhibition zone diameter of 20.75mm. MRSA 8 with the least MIC of 100mg/ml and 12.5mg/ml for the ethanol extract of *Persea americana* and *Psidium guajava* leaves respectively, gave a mean combined inhibition zone diameter of 29.5mm.

The mean of the combined inhibition zone diameter varied between 20 to 30mm. This result signifies a synergism in the antibacterial effects of both plant extracts against Methicillin-resistant *Staphylococcus aureus*. The zone of inhibition of the test Isolate MRSA 1 when conducted as a single extract using *Persea americana* produced 8mm with the least MIC (50mg/ml), while 7mm was observed with the least MIC (25mg/ml) using *Psidium guajava*. The combined zone of inhibition using this same isolate with the same MICs when conducted gave 23mm which signifies a synergistic effect. The same observation was carefully noted with significant improvement on other isolates. In addition, in **Figure 1**, this combined effect showed a significant improvement in the antibacterial action, when compared with the antibacterial effect of a sole plant extract and in addition with the standard antibiotic. Thus, the interesting synergistic effect of ethanol extract of *Persea americana* and *Psidium guajava* leaves extracts will be of good alternative to combat multidrug resistance organisms, and to the best of our knowledge and literature review, this is the first report on the combined effects of *Persea americana* and *Psidium guajava* leaves on Methicillin Resistant *Staphylococcus aureus*, (MRSA). This could be of significance in health care as it could be used as an alternative to conventional drugs in the treatment of diseases caused by Methicillin-Resistant *Staphylococcus aureus*, (MRSA). This could also be used in the case of blind treatment where the case of infection is not known. Since time immemorial, early man has been said to use plants in the treatment of various ailments. Herbal medicine is still practiced in many parts of the world for the treatment and prevention of diseases especially in local regions with a variety of vegetation.

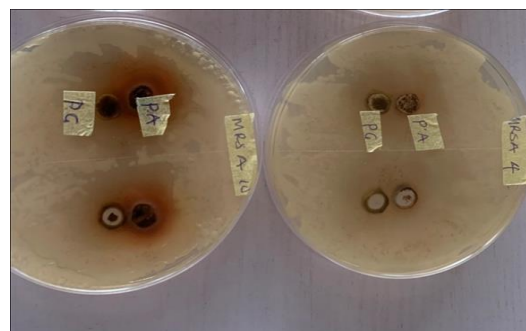


Figure 1. Combined zones of inhibition of Ethanolic extract of *Persea americana* and *Psidium guajava* leaves.

CONCLUSION

The results of this research indicated that the combined antibacterial effect of both plant extracts has significant antibacterial activity in isolation and a significant synergistic effect against Methicillin Resistant *Staphylococcus aureus*, (MRSA) when combined. Subsequently from the results, it could serve as a good candidate for those strains which have developed resistance or as an alternative to conventional drugs in the treatment of these strains of *Staphylococcus aureus*. This combined effect would not only produce a synergistic effect but also reduce drug toxicity and also reduce the emergence of drug resistance.

ACKNOWLEDGMENTS: The staff of the Department of Pharmaceutical Microbiology and Biotechnology.

CONFLICT OF INTEREST: None

FINANCIAL SUPPORT: None

ETHICS STATEMENT: All ethical considerations of this research were observed and followed accordingly.

REFERENCES

1. Ansori AN, Fadholly A, Proboningrat A, Antonius Y, Hayaza S, Susilo RJ, et al. Novel antiviral investigation of annona squamosa leaf extract against the dengue virus type-2: In vitro study. *Pharmacogn J.* 2021;13(2):456-62. doi:10.5530/pj.2021.13.58
2. Okafo SE, Felix O, Enwa FO, Amusile O. Formulation and evaluation of

- antimicrobial properties of psidium guajava ethanol leaf extract creams. Trop J Nat Prod Res. 2021;5(12):2144-8. doi:10.26538/tjnpr/v5i12.17
3. Crane JH, Balerdi CF. Guava growing in the Florida home landscape. Univ Florida. 2016;3:230-3.
 4. El-Desouky TA. Evaluation of effectiveness aqueous extract for some leaves of wild edible plants in Egypt as anti-fungal and anti-toxicogenic. Heliyon. 2021;7(2):e06209. doi:10.1016/j.heliyon.2021.e06209
 5. Gutiérrez RM, Mitchell S, Solis RV. Psidium guajava: A review of its traditional uses, phytochemistry and pharmacology. J Ethnopharmacol. 2008;117(1):1-27.
 6. Kumar M, Tomar M, Amarowicz R, Saurabh V, Nair MS, Maheshwari C, et al. Guava (*Psidium guajava* L.) Leaves: Nutritional composition, phytochemical profile, and health-promoting bioactivities. Foods. 2021;10(4):752. doi:10.3390/foods10040752
 7. Akinjogunla OJ, Adegoke AA, Udokang IP, Adebayo-Tayo BC. Antimicrobial potential of *Nymphaea lotus* (Nymphaeaceae) against wound pathogens. J Med Plant Res. 2009;3(3):138-41.
 8. Ardalani H, Hejazi Amiri F, Hadipanah A, Kongstad KT. Potential antidiabetic phytochemicals in plant roots: A review of in vivo studies. J Diabetes Metab Disord. 2021;20(2):1837-54. doi:10.1007/s40200-021-00853-9
 9. Buvanewari S, Raadha CK, Krishnaveni N, Jayashree S. In-vitro antimicrobial activity of *Psidium guajava* against clinically important strains. EJ Life Sci. 2011;1(1):14-22.
 10. Zargoosh Z, Ghavam M, Bacchetta G, Tavili A. Effects of ecological factors on the antioxidant potential and total phenol content of *Scrophularia striata* Boiss. Sci Rep. 2019;9(1):16021.
 11. Adeyemi OO, Okpo SO, Ogunti OO. Analgesic and anti-inflammatory effects of the aqueous extract of leaves of *Persea americana* Mill (Lauraceae). Fitoterapia. 2002;73(5):375-80.
 12. Oghenemaro EF, Sochi EO, Oghenovo OF, Michael O. The evaluation of the In-Vitro antibacterial and anti-inflammatory potentials of the tender water of *Cocosnucifera* (L.). World J Environ Biosci. 2023;12(4):8-13. doi:10.51847/JqUXHGZ6r0
 13. Ogundare AO, Oladejo BO. Antibacterial activities of the leaf and bark extract of *Persea americana*. Am J Ethnomed. 2014;1(1):064-71.
 14. Rodrigues AM, Silva AA, Pinto CC, Santos DL, Freitas JC, Martins VE, et al. Larvicidal and enzymatic inhibition effects of *Annona muricata* seed extract and main constituent annonacin against *Aedes aegypti* and *Aedes albopictus* (Diptera: Culicidae). Pharmaceuticals. 2019;12(3):112. doi:10.3390/ph12030112
 15. Leite DO, de FA Nonato C, Camilo CJ, de Carvalho NK, da Nobrega MG, Pereira RC, et al. *Annona* genus: traditional uses, phytochemistry and biological activities. Curr Pharml Des. 2020;26(33):4056-91. doi:10.2174/1381612826666200325094422
 16. Almalki G, Rabah S, Al-Faifi Z, Alharbi A, Sharma M. Phytochemistry screening, antioxidant and antimicrobial activities of *Euphorbia inarticulata* schweinf plant extract. Pharmacophore. 2022;13(1):91-9.
 17. Al Kazman BSM, Harnett JE, Hanrahan JR. Traditional uses, phytochemistry and pharmacological activities of annonaceae. Molecules. 2022;27(11):3462. doi:10.3390/molecules27113462
 18. Jevons MP. "Celbenin"-resistant staphylococci. Br Med J. 1961;1(5219):124-5.
 19. Koudoro AY, Tamfu AN, Munvera AM, Kucukaydin S, Cokou PAD, Avlessi F, et al. Phenolic composition, anti-biofilm, anti-quorum sensing, antioxidant and enzyme inhibitory activities of *Pteleopsis Suberosa* (Combretaceae) Leaves. Pharmacophore. 2023;14(3):89-99.
 20. Kumar R, Singh G. Substituted benzimidazoles as antibacterial and antifungal agents: A review. Pharmacophore. 2022;13(2):41-55.
 21. Enwa FO, Egbule OS, Oyubu LO, Damera CN, Momoh TO. Characterization of methicillin-resistant staphylococcus aureus from adult out-patients visiting delta state university teaching hospital, Oghara. J Biochem

- Technol. 2023;14(4):15-8.
doi:10.51847/I5U79fysvK
22. Clinical Laboratory Standards Institute (CLSI). Performance standards for antimicrobial disc and dilution susceptibility tests for bacteria isolated from animal. 2022;32(7):12-4.
23. Oghenemaro EF, Oise IE, Cynthia D. The effects of securinaga virosa leaves on methicillin-resistant staphylococcus aureus (MRSA). Int J Pharm Res Allied Sci. 2021;10(2):29-34.
doi:10.51847/HAQZ2xRZFh
24. Ningsih G, Fajrina A, Husnunnisa, Rivai H. Overview of the botanical, phytochemical and antibacterial activity of the avocado plant (*Persea americana* mill). World J Pharm Pharm Sci. 2020;9(11):2602-20.
25. Anas K, Jayasree PR, Vijayakumar T, Manish Kumar PR. In vitro antibacterial activity of *Psidium guajava* Linn. leaf extract on clinical isolates of multidrug resistant *Staphylococcus aureus*. Indian J Exp Biol. 2008;46(1):41-6.